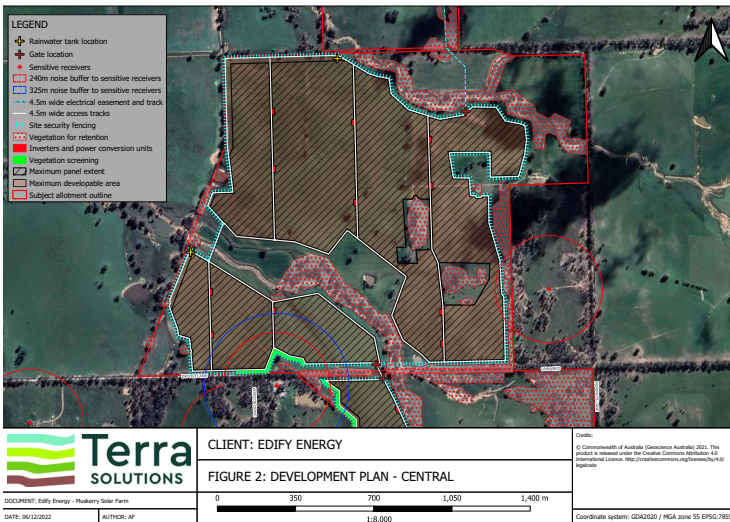


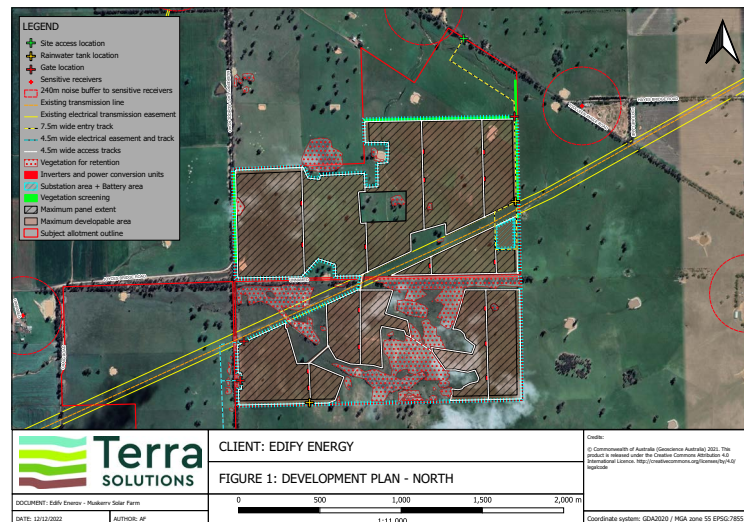
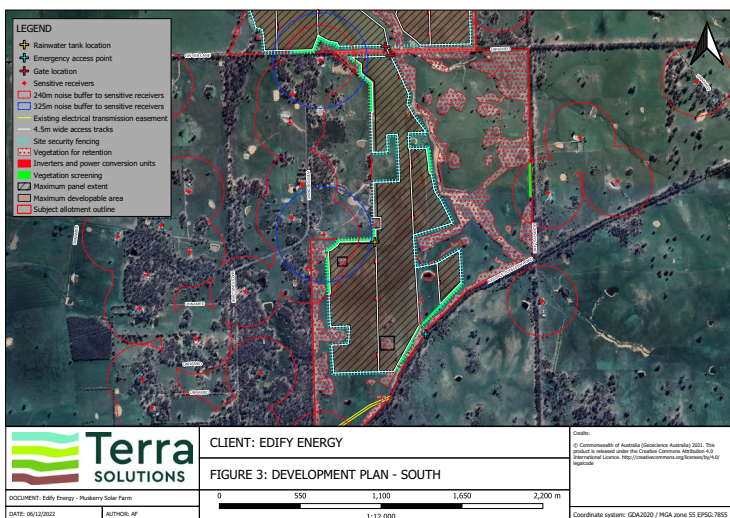
# Muskerry Solar Power Station

Renewable energy for a bright future

The Muskerry Solar Power Station (MSPS) is located approximately 33 km east of Bendigo, in the communities of Muskerry and Toolleen, VIC. The development will host AusNet's 220kV transmission network. Access is via Toolleen Angle Road, Muskerry, VIC. The 496-hectare development site has the potential to accommodate up to 250 MW of solar photovoltaic electricity generation, supported by an integrated 200MW battery system.



Scan the QR code to visit our project page





## Why Muskerry, VIC?

The Muskerry site was chosen by Edify Energy because of:

- > Access to large areas of flat, open terrain historically used for cropping and grazing.
- > Proximity to AusNet's 220kV transmission line, eliminating the need for additional overhead transmission line easements.
- > Good solar resource.
- > Good access to the site, via Northern Highway and Toolleen Angle Road, which allows easy supply of plant and equipment during construction.

## Project benefits

The development, construction and multi-decade operation of Muskerry Solar Power Station will create the following benefits:

- > Employment opportunities, with an anticipated peak workforce of approximately **350 personnel during construction** and about **10 full-time employees during operations**.
- > Potential for direct and indirect **investment into the Campaspe shire and Bendigo region**.
- > Once complete, produce enough **renewable power to supply over 93,000 homes each year for 30 years**.
- > Contributes to the VIC Government's Renewable Energy and Storage Targets, which are the largest in Australia through **leveraging the Central North Renewable Energy Zone (REZ)**

## Who is Edify

Edify Energy is an Australian renewable energy development and investment company. We specialise in large-scale renewable energy and battery storage projects, across their entire life-cycle including development, financing, construction management and asset management.

We take an active, quality and relationship-driven approach to our projects with a strong emphasis on community engagement. This, combined with a holistic life-cycle view of projects ensures high-performing assets over the long-term which in turn maximises the local benefits.

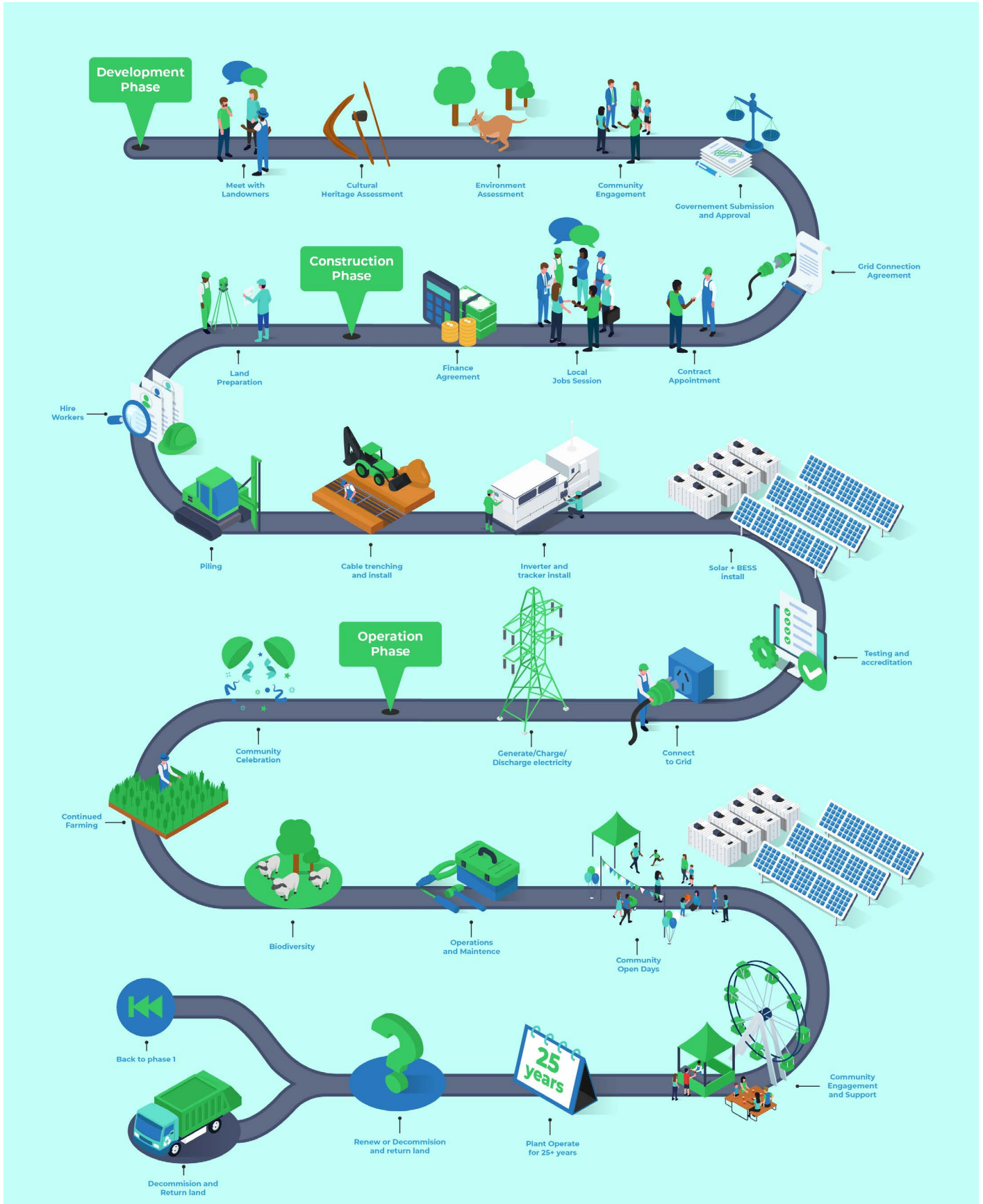
We currently have six solar farms and two utility-scale battery systems installed across Victoria, Queensland and New South Wales. This represents \$1.7 billion of successfully delivered investments, or 795MWp of renewable energy capacity that will generate beyond 2050.





# Life Cycle OF A SOLAR FARM

What are the stages of building a solar farm, and what to expect from each stage?





## Benefits for the local community

### Socio-Economic Development

- > Approx. 30% of the capital deployed is into the accounts of local trades, laborers, suppliers and services.
- > An injection of diversity into existing local industry, as well as stimulating new and alternative employment opportunities.

### Employment & Skills Creation

- > In the region of 350 jobs are created during construction, with strong emphasis on local content.
- > Throughout the 30 year term of operation and management, up to 10 site roles are required plus many additional support services sourced locally.
- > There are opportunities for TAFE apprenticeships, engineering cadetships and other high skilled training.

### Community Participation

- > Local initiatives and sponsorship projects are supported long after the last post is in the ground.
- > Schools and educational programs, both on site and in the classroom ignite the next generation.



The VIC Government Planning Portal will shortly exhibit the project's Planning Application. Edify anticipates this to be available from this QR code in late-March, April 2023.



Level 1, 34-35 South Steyne

Manly NSW 2095

+61 2 8790 4000

hello@edifyenergy.com

www.edifyenergy.com